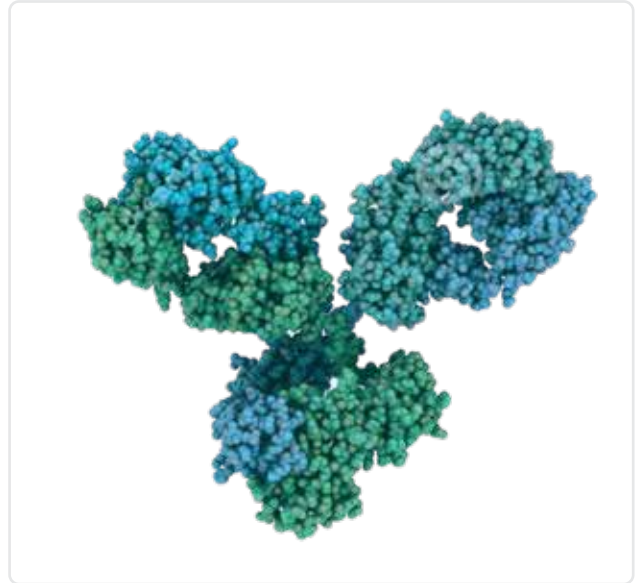


True point-of-care for Infliximab monitoring

Over the past two decades great improvements in therapy of chronic inflammatory diseases have been made. The rise of TNF biologics like infliximab has been a great step forward to ameliorating disease course and keep inflammations at remission levels for prolonged periods of time. Therapeutic Drug Monitoring (TDM) of biotherapies is a well recognized tool allowing a better usage of biotherapies by making evidence-based treatment decisions.

However, all the benefits of TDM for infliximab are not available on a true point-of-care platform. Current limitations in testing force dose adjustments to come weeks after trough level testing.


ProciseDx™ allows immediate decisions on drug dose adjustments at the time of infusion in only 5 minutes with finger prick blood by virtually any level laboratory technician.



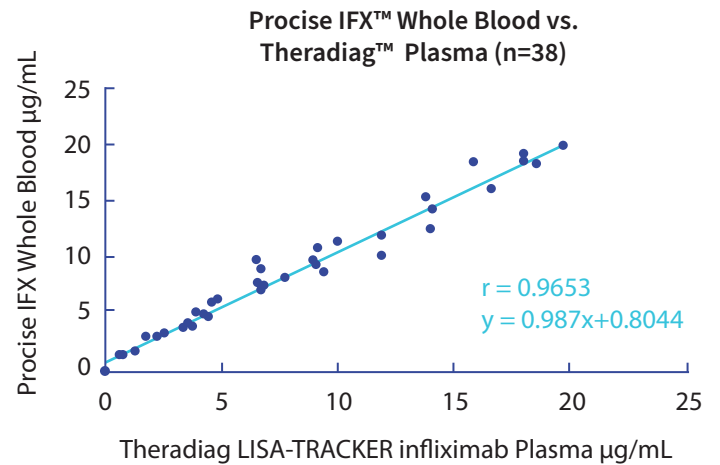
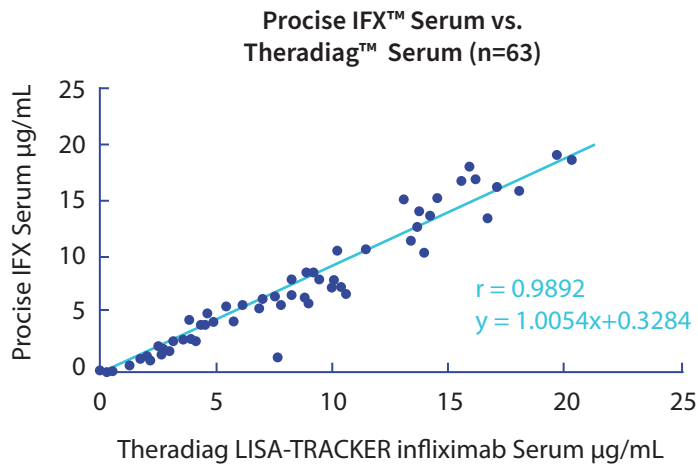
Real Impact

- ✓ on cost.
- ✓ on timing.
- ✓ on patient treatment decision.
- ✓ on who can do the test and where.

Product Information

Sample Types	Finger prick whole blood, venous blood, or serum.
Reportable Range	1.7µg/mL - 77.2µg/mL
Time to Results	Less than 5 minutes
Stability	2 years at room temperature
Validated for	Infliximab (Remicade®, Remsima®, Inflectra®, Flixabi® and Rensflexis®)
Procise IFX 	Calibrated against WHO Standard

Performance



Precision

Level	Avg[IFX] $\mu\text{g/mL}$	%CV
Low QC	3.1	4.8%
High QC	20.3	2.8%
Low Serum	4.4	3.1%
Med Serum	9.0	3.3%
High Serum	36.5	2.8%

Ordering Information

Item	Cat #	Description	#/Kit
IFX Assay	4828	Kit for conducting assays	20
In addition to 20 tests, the kit includes:			
	5107	Buffer bulbs	20
	4865	IFX controls	2 Hi and 2 Low
	5108	Whole blood pipettes	20



“With ProciseDx, we will be able to measure levels of infliximab and adalimumab in five minutes from fingerstick blood. This information during the patient visit will be incorporated into our immediate treatment decisions.”

-Geert D’Haens, Professor of Gastroenterology at AMC & Director of European Operations at Robarts Clinical Trials



9449 Carroll Park Drive San Diego, CA, 92121 - United States

info@procisediagnostics.com